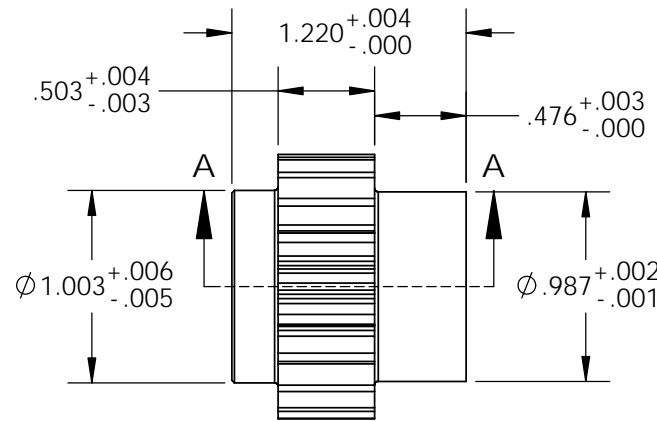
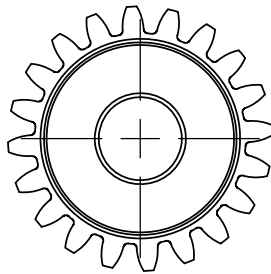
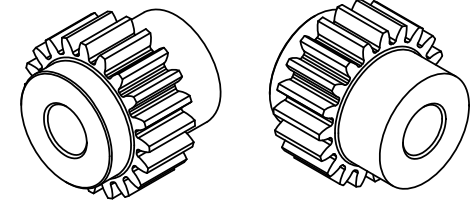
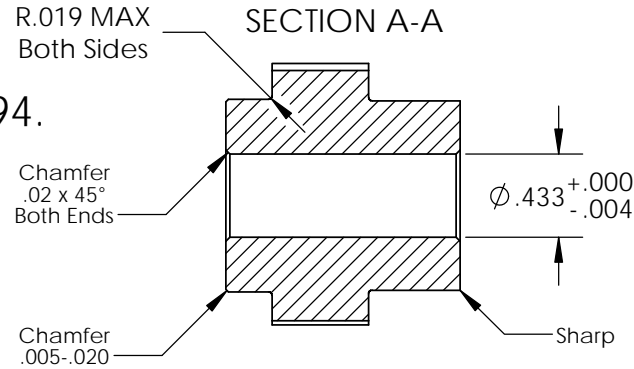
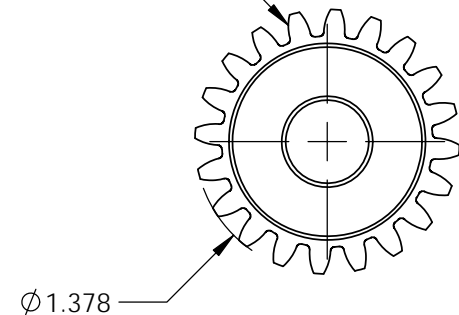


Make From Un-Plated Part 2294.

Finish: Electroless Nickel Plate .0015-.0020 Thick.
 Per SPG-MPS-008 Section 5.2.1 Class 1 Coating
 Section 6.5, Grade C, Post Bake, Section 6.7
 Table 1, Class 1, HT<=180.



20 Tooth
 16 DP
 14.5° Pa
 1.250 Pd



REV	DESCRIPTION	DATE	UNLESS OTHERWISE SPECIFIED: DIMENSIONS ARE IN INCHES TOLERANCES: FRACTIONAL ± .010 TWO PLACE DECIMAL ± .010 THREE PLACE DECIMAL ± .005 FOUR PLACE DECIMAL ± .0005 CONCENTRICITY .005 T.I.R. MAX BREAK SHARP EDGES .005-.010	20T, 16DP, 14.5°Pa Gear & Hub Plated	Tiny-Clutch Helander Products, Inc. Clinton, Connecticut www.TinyClutch.com		
	All Specifications Subject To Master Drawing 2306 Rev. A.		PROPRIETARY AND CONFIDENTIAL THE INFORMATION CONTAINED IN THIS DRAWING IS THE SOLE PROPERTY OF HELANDER PRODUCTS, INC. ANY REPRODUCTION IN PART OR AS A WHOLE WITHOUT THE WRITTEN PERMISSION OF HELANDER PRODUCTS, INC. IS STRICTLY PROHIBITED.	DRAWN BY: P3	SIZE A	DWG. NO. 2306	REV A.a
				MATERIAL: 12L14	SCALE: 1:1	3/13/2014	SHEET 1 OF 1