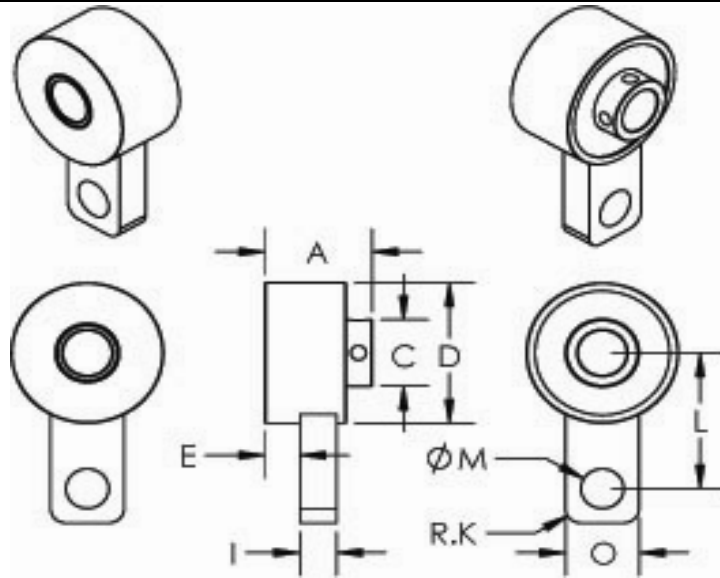


D125MR



Tiny-Clutch D125MR D-Series Roller Clutch

Specifications:		Options:	
Max Torque	50 in/lbs	Bore	5/16", 3/8", 7/16", 1/2", 8mm, 9mm, 10mm, 11mm, 12mm, 13mm
Max Speed	2000 rpm		Set Screw, CrossHole
Dimension A	1.09 in	Mounting	Set Screw & Cross Hole
Dimension C	0.75 in		Keyway w/ Set Screw
Dimension D	1.55 in	Drive	Clockwise, Counter Clockwise
Dimension E	0.36 in		
Dimension I	0.38 in		
Dimension K	0.16 in		
Dimension L	1.50 in		
Dimension M	0.44 in		
Dimension O	0.75 in		

Tiny-Clutch | Helander Products, Inc.

www.TinyClutch.com

TinyClutch@HelanderProducts.com

860.669.7953