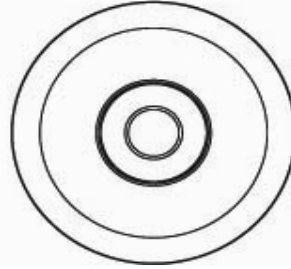
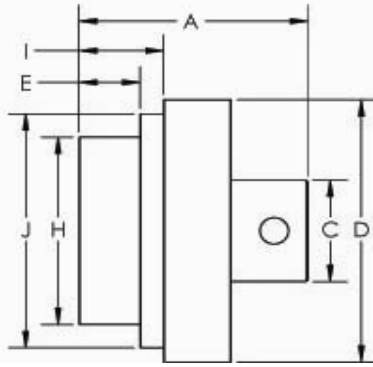
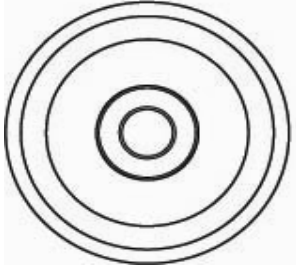
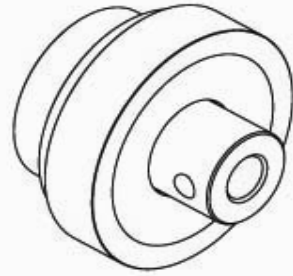
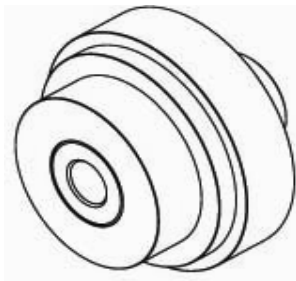


D75C



Tiny-Clutch D75C D-Series Roller Clutch

Specifications:

Max Torque	10 in/lbs
Max Speed	6000 rpm
Dimension A	0.85 in
Dimension C	0.41 in
Dimension D	1.05 in
Dimension E	0.22 in
Dimension H	0.755 in 0.745 in
Dimension I	0.31 in
Dimension J	0.94in

Options:

Bore	3/16", 1/4", 5/16", 4mm, 5mm, 6mm, 7mm, 8mm
Mounting	Set Screw, CrossHole Set Screw & Cross Hole Keyway w/ Set Screw
Drive	Clockwise, Counter Clockwise

Tiny-Clutch | Helander Products, Inc.

www.TinyClutch.com

TinyClutch@HelanderProducts.com

860.669.7953