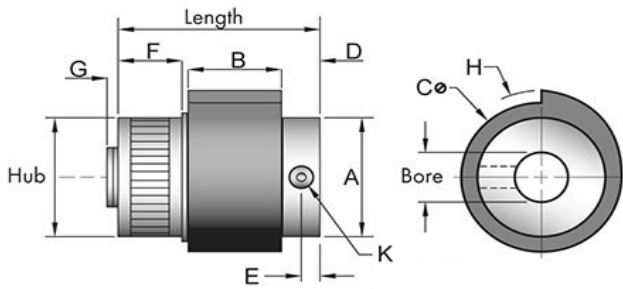
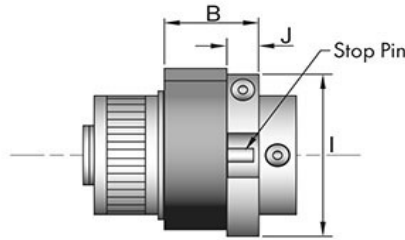


SP100A



STANDARD MODEL



ADJUSTING COLLAR OR
OVERTRAVEL STOP

Tiny-Clutch SP100A SP-Series Wrap Spring Clutch

Specifications:		Options:	
Max Torque	250 in/lbs	Bore	3/8", 7/16", 1/2", 9/16", 5/8", 9mm,
Length	2.04 in		10mm, 11mm, 12mm, 13mm, 14mm,
Hub	1.125 in		15mm, 16mm
Dimension A	1.40 in	Mounting	Set Screw, Cross Hole,
Dimension B	1.00 in		Set Screw & Cross Hole
Dimension C	1.50 in	Drive	Clockwise, Counter Clockwise
Dimension D	0.33 in	Input	Hub, Shaft
Dimension E	0.16 in	Function	Overrunning *, On-Off **, Indexing **
Dimension F	0.56 in	# of Trip Lugs	0, 1, 2, 3, 4, 5, 6, 8, 10, 12 Lugs
Dimension G	0.10 in	Hub Type	Knurled Drum, Plain Drum
Dimension H	0.87 in	Add-Ons	Adjusting Clamp ***
Dimension I	1.50 in		Over-Travel Stop ***
Dimension J	0.27 in		

* Requires 0 Lugs ** Requires 1 or more Lugs *** Only available with indexing

Tiny-Clutch | Helander Products, Inc.