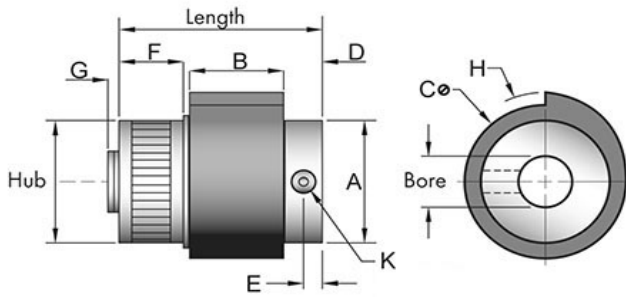
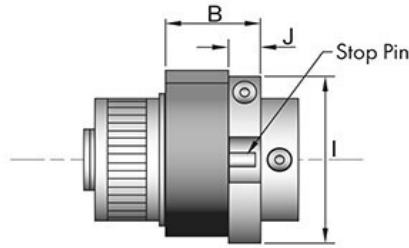


# SP100B



STANDARD MODEL



ADJUSTING COLLAR OR  
OVERTRAVEL STOP

## Tiny-Clutch SP100B SP-Series Wrap Spring Clutch

### Specifications:

### Options:

<b>Max Torque</b>	250 in/lbs		<b>Bore</b>	3/8", 7/16", 1/2", 9/16", 5/8", 9mm,
<b>Length</b>	2.04 in			10mm, 11mm, 12mm, 13mm, 14mm,
<b>Hub</b>	1.25 in			15mm, 16mm
<b>Dimension A</b>	1.40 in		<b>Mounting</b>	Set Screw, Cross Hole,
<b>Dimension B</b>	1.00 in		<b>Drive</b>	Set Screw & Cross Hole
<b>Dimension C</b>	1.50 in		<b>Input</b>	Clockwise, Counter Clockwise
<b>Dimension D</b>	0.33 in		<b>Function</b>	Hub, Shaft
<b>Dimension E</b>	0.16 in		<b># of Trip Lugs</b>	Overrunning *, On-Off **, Indexing **
<b>Dimension F</b>	0.56 in		<b>Hub Type</b>	0, 1, 2, 3, 4, 5, 6, 8, 10, 12 Lugs
<b>Dimension G</b>	0.10 in		<b>Add-Ons</b>	Knurled Drum, Plain Drum
<b>Dimension H</b>	0.87 in			Adjusting Clamp ***
<b>Dimension I</b>	1.50 in			Over-Travel Stop ***
<b>Dimension J</b>	0.27 in			

\* Requires 0 Lugs

\*\* Requires 1 or more Lugs

\*\*\* Only available with indexing

Tiny-Clutch | Helander Products, Inc.

www.TinyClutch.com

TinyClutch@HelanderProducts.com

860.669.7953