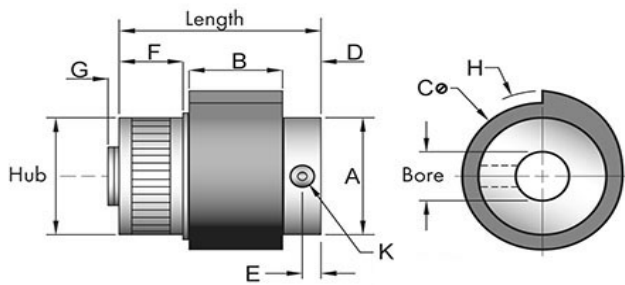
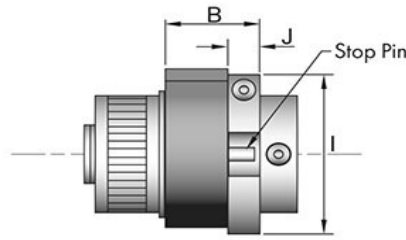


# SP56C



STANDARD MODEL



ADJUSTING COLLAR OR  
OVERTRAVEL STOP

## Tiny-Clutch SP56C SP-Series Wrap Spring Clutch

Specifications:		Options:	
Max Torque	25 in/lbs	Bore	1/4", 5/16", 6mm, 7mm, 8mm
Length	1.19 in	Mounting	Set Screw, Cross Hole,
Hub	0.75 in		Set Screw & Cross Hole
Dimension A	0.75 in	Drive	Clockwise, Counter Clockwise
Dimension B	0.56 in	Input	Hub, Shaft
Dimension C	0.94 in	Function	Overrunning *, On-Off **, Indexing **
Dimension D	0.22 in	# of Trip Lugs	0, 1, 2, 3, 4, 5, 6, 8, 10, 12 Lugs
Dimension E	0.11 in	Hub Type	Knurled Drum, Plain Drum,
Dimension F	0.37 in	Add-Ons	Adjusting Clamp ***
Dimension G	0.06 in		Over-Travel Stop ***
Dimension H	0.56 in		
Dimension I	1.06 in		
Dimension J	0.21 in		

\* Requires 0 Lugs    \*\* Requires 1 or more Lugs    \*\*\* Only available with indexing

elander Products, Inc.

www.TinyClutch.com

TinyClutch@HelanderProducts.com

860.669.7953