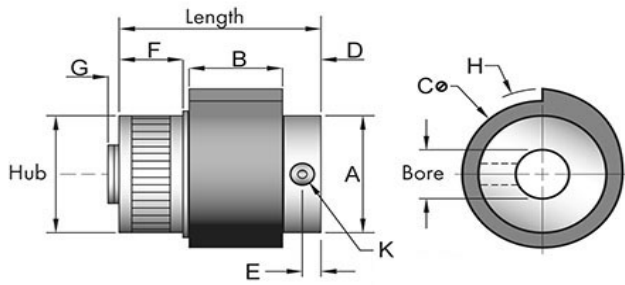
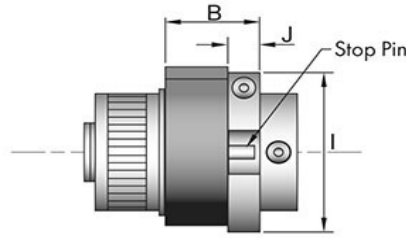


# SP56D



STANDARD MODEL



ADJUSTING COLLAR OR  
OVERTRAVEL STOP

## Tiny-Clutch SP56D SP-Series Wrap Spring Clutch

Specifications:		Options:	
<b>Max Torque</b>	25 in/lbs	<b>Bore</b>	1/4", 5/16", 6mm, 7mm, 8mm
<b>Length</b>	0.94 in	<b>Mounting</b>	Set Screw, Cross Hole,
<b>Dimension A</b>	0.75 in		Set Screw & Cross Hole
<b>Dimension B</b>	0.56 in	<b>Drive</b>	Clockwise, Counter Clockwise
<b>Dimension C</b>	0.94 in	<b>Input</b>	Hub, Shaft
<b>Dimension D</b>	0.22 in	<b>Function</b>	Overrunning *, On-Off **, Indexing **
<b>Dimension E</b>	0.11 in	<b># of Trip Lugs</b>	0, 1, 2, 3, 4, 5, 6, 8, 10, 12 Lugs
<b>Dimension G</b>	0.06 in	<b>Hub Type</b>	3-Hole Drum
<b>Dimension H</b>	0.56 in	<b>Add-Ons</b>	Adjusting Clamp ***
<b>Dimension I</b>	1.06 in		Over-Travel Stop ***
<b>Dimension J</b>	0.21 in		

\* Requires 0 Lugs    \*\* Requires 1 or more Lugs    \*\*\* Only available with indexing

Tiny-Clutch | Helander Products, Inc.