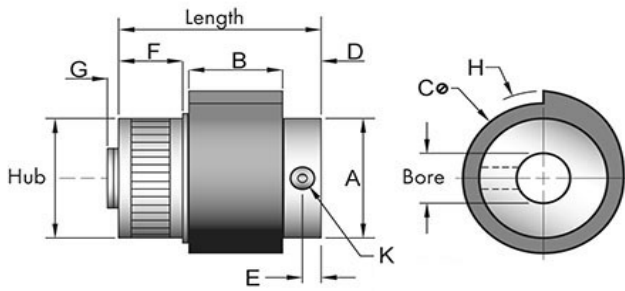
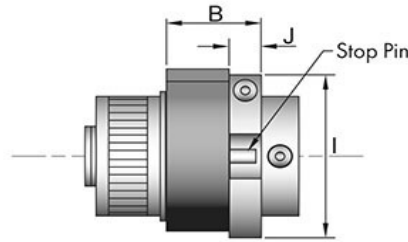


SP93



STANDARD MODEL



ADJUSTING COLLAR OR
OVERTRAVEL STOP

Tiny-Clutch SP93 SP-Series Wrap Spring Clutch

Specifications:		Options:	
Max Torque	60 in/lbs	Bore	3/8", 7/16", 1/2", 9/16", 9mm, 10mm,
Length	1.56 in		11mm, 12mm, 13mm, 14mm
Hub	1.25 in	Mounting	Set Screw, Cross Hole,
Dimension A	1.19 in		Set Screw & Cross Hole
Dimension B	0.83 in	Drive	Clockwise, Counter Clockwise
Dimension C	1.38 in	Input	Hub, Shaft
Dimension D	0.26 in	Function	Overrunning *, On-Off **, Indexing **
Dimension E	0.12 in	# of Trip Lugs	0, 1, 2, 3, 4, 5, 6, 8, 10, 12 Lugs
Dimension F	0.37 in	Hub Type	Knurled Drum, Plain Drum
Dimension G	0.07 in		Adjusting Clamp ***
Dimension H	0.82 in	Add-Ons	Over-Travel Stop ***
Dimension I	1.50 in		
Dimension J	0.27 in		

* Requires 0 Lugs ** Requires 1 or more Lugs *** Only available with indexing

Tiny-Clutch | Helander Products, Inc.