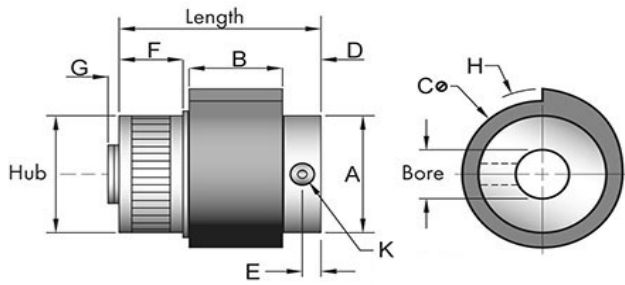
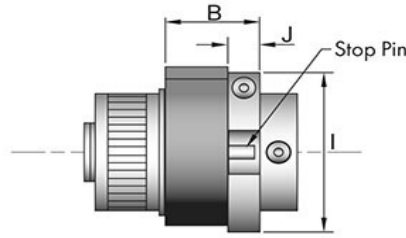


SP50



STANDARD MODEL



ADJUSTING COLLAR OR
OVERTRAVEL STOP

Tiny-Clutch SP50 SP-Series Wrap Spring Clutch

Specifications:		Options:	
Max Torque	15 in/lbs	Bore	1/8", 3/16", 1/4", 5/16", 3mm, 4mm, 4mm, 5mm, 6mm, 7mm, 8mm
Length	1.00 in	Mounting	Set Screw, Cross Hole, Set Screw & Cross Hole
Hub	0.625 in	Drive	Clockwise, Counter Clockwise
Dimension A	0.69 in	Input	Hub, Shaft
Dimension B	0.45 in	Function	Overrunning *, On-Off **, Indexing **
Dimension C	0.84 in	# of Trip Lugs	0, 1, 2, 3, 4, 5, 6, 8 Lugs
Dimension D	0.18 in	Hub Type	Knurled Drum, Plain Drum
Dimension E	0.09 in	Add-Ons	Adjusting Clamp *** Over-Travel Stop ***
Dimension F	0.31 in		
Dimension G	0.06 in		
Dimension H	0.48 in		
Dimension I	0.94 in		
Dimension J	0.19 in		

* Requires 0 Lugs ** Requires 1 or more Lugs *** Only available with indexing

Tiny-Clutch | Helander Products, Inc.